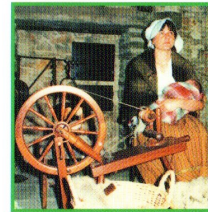
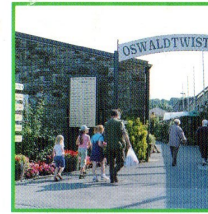
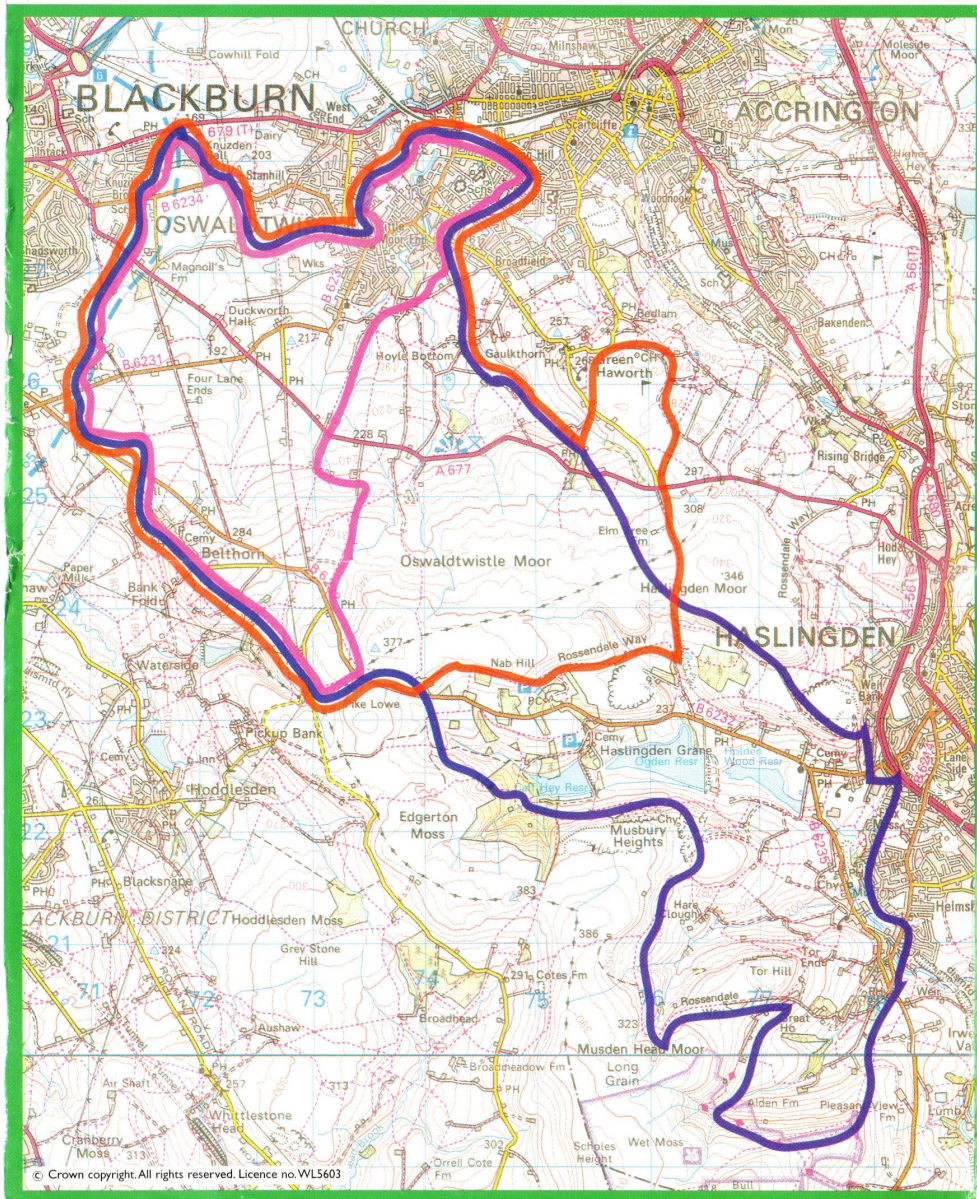


Route Map of The Great Oswaldtwistle Jubilee Walk

— Route One 11 miles
 — Route Two 15 miles
 — Route Three 21 miles



The Great Oswaldtwistle Walk was started in 1967 to bring public attention to the beautiful scenic moorland walks in the area. Since then the walk has become an important annual event in the the Long Distance Walkers Calendar. The walk is divided in to three sections of 11, 15 and 21 miles in length. The routes follow the tracks and bridleways used in the days of handloom weavers and chapmen. This is the land of Robert 'Parsley' Peel, pioneer of calico printing in the north of England and his employee James Hargreaves, the inventor of the 'Spinning Jenny'. Luddites also marched on these routes to smash machines in times of hardship. Facing the death penalty some were later transported as convicts to Australia. This year there are people coming from Australia to take part. Every walker completing their chosen walk receives a special commemorative Queen's Jubilee badge, and certificate from the organisers, the Oswaldtwistle Civic Society.

This popular annual walk will take place on Sunday 9 June 2002. It gives the whole family the chance to get their walking boots on and see some of Lancashire's finest scenery from the West Pennine Moors. The walk begins from Oswaldtwistle Mills at 9am, walkers are asked to be there at 8.30am.

Oswaldtwistle Mills - Starting Point



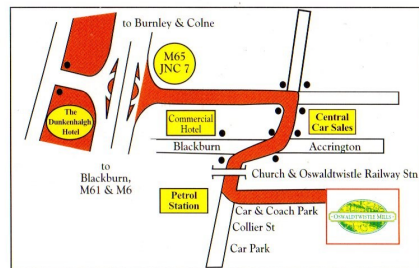
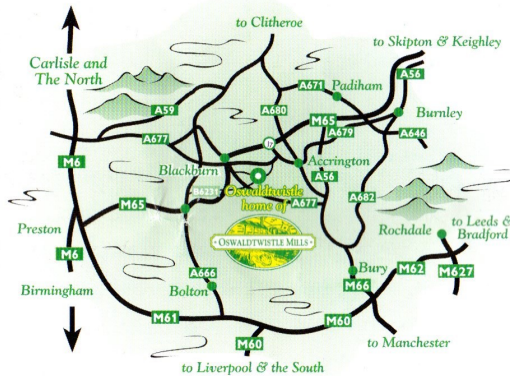
The Great Oswaldtwistle Jubilee Walk starts from Oswaldtwistle Mills Shopping Village. Toilets and restaurant facilities are available at the complex. Walkers assemble at 8.30am for a 9am start.

Oswaldtwistle Mills Shopping Village

is situated 20 minutes from Junction 29 on M6 follow M65 to Junction 7. Or Junction 18 on M62/M60 onto M66 then M65 to Junction 7.

From Junction 7 take the A6185 sign-posted Accrington. Turn right at the traffic lights on to B6231 sign-posted Oswaldtwistle. Turn right at next traffic lights and almost immediately turn left at next lights, still B6231 Oswaldtwistle on to Union Road. Follow road, under the railway bridge and turn left immediately after the Palladium into Moscow Mill Street, car park is on the right.

www.o-mills.co.uk



Directions

The Great Oswaldtwistle Jubilee Walk



Sunday
9th June
2002

"A walk for all the family"