

Due to its elevated nature **Peel Park** is visible from **Accrington** and the surrounding area. It is located between the **A679 (Burnley Road)** and **A680 (Manchester Road)** and the **A56**. The car park (**BB5 6HF**) is accessed from **Peel Park Avenue (off Burnley Road)**. The main entrance is located at the top of **Avenue Parade**. The entrance to **Arden Hall** is located at the top of **Plantation Street (BB5 6RU)**.

# EXPLORE PEEL PARK

If you require this information in a different format, for example large print, audio or in different languages please let us know.

**Hyndburn Borough Council,  
Scaitcliffe House,  
Ormerod Street  
Accrington  
BB5 0PF**

[www.hyndburnbc.gov.uk](http://www.hyndburnbc.gov.uk)

Tel : 01254 388111

Out of Office hours : 0800 5875273



Enjoy leisurely walks through the countryside and explore woodland and heathland on your journey to the summit.





### KEY

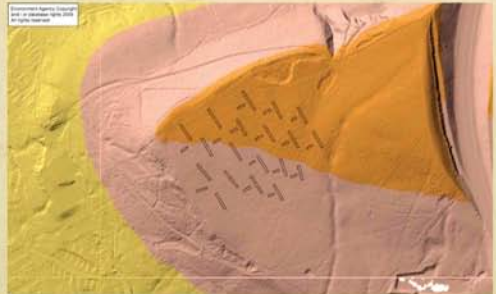
-  Woodland.
-  Main paths leading to and around the summit.
-  Concessionary bridleway
-  Informal paths
-  Vehicular access to car park
-  Pedestrian access
-  Steps
-  Biological Heritage Site.
-  Allotments
-  Lodges, ponds and streams.
-  ① Site of Arden Hall Ruins
-  ② Site of Plantation Mill Ruins
-  ③ Site of the trenches
-  ④ Car Park & Site of Hillock Farm Ancient Farmstead
-  ⑤ Site of Plantation House Ruins
-  ⑥ Original Site of Accrington Stanley Football Ground
-  Field gates
-  All ability kissing gate (RADAR key required for extended width)
-  B Benches
-  Picnic tables
-  S Information signs.
-  Play Area
-  Multi-use games area

## History of the area

The land at Peel Park was originally owned by the Peel family, a family of wealthy industrialists who made their name in the calico (cotton) printing industry during the 18th century. They were prominent in local and national society, most notably Robert Peel who was Prime Minister in 1841, and who is particularly remembered for his role in establishing the London metropolitan police force ('The Peelers or bobbies'). In 1909, Mr. William Peel gifted 14 hectares of land on The Coppice and an additional 23 hectares were purchased by the Council. As a mark of appreciation, the new amenity was called "Peel Park". The park was formally opened on the 29th September, 1909 with the ceremonial unveiling of the memorial to William Peel. This memorial is now known locally as 'the monument'. The monument was restored in 2009 which marked the centenary of the acquisition of Peel Park.

## Accrington Pals and the trenches

The park has been associated with the Accrington Pals battalion, who were reputed to have trained on the Coppice in rough ground to the northeast of the memorial before going to fight in the First World War in 1916. More obvious are the narrow, interrupted 'H' shaped trenches which can still be seen across the plateau. Trenches of this nature were often excavated as anti-glider trenches on areas within 5 miles of strategically important sites such as armament factories during the Second World War.



## Accrington Stanley



Accrington Stanley's football ground, while they were in the 3rd league from 1921 to 1962, was located on what is now the large grass school fields at Peel Park Primary School.

## Brick manufacture

The area was famous for the manufacturer of engineering quality distinctly red bricks known as 'Accrington Bloods'. This was due to both mudstone and coal measures in the area. The famous 'Nori' brick or Iron backwards, has renowned engineering strength as anyone who has a house built from this brick will know. The Accrington brick has been used for the foundations of the Empire State Building and Blackpool Tower.



## Hillock Farm

Ruins are still visible by the main car park of an ancient farmstead known as Hillock Farm which



was established in the medieval period. Evidence of the farm house can be seen on site which was built around the late 16th or early 17th century. The farm operated up until the early 20th century.

## Habitats

Peel Park including Arden Hall and The Coppice covers an area of 50 hectares and consists of a range of habitats including woodland, heathland, grassland and standing and running water.

- A variety of flora and fauna has been recorded in the area including: *Roe Deer, red fox, Daubenton's and Pipistrelle bats, watervole, hedgehogs and over 70 different bird species.*



All photo's taken by Lee Aaron



## Biological Heritage Site

Over half of the 50 hectare site is covered by a Biological Heritage Site designation. Biological Heritage Site (BHS) is the name given to the most important non-statutory wildlife sites in Lancashire. Parts of the woodland and grassland between Arden Hall and the upper lodges were first identified as a BHS in September 1993 the BHS was extended in 2014 to include the lowland heathland on the summit, a habitat of European importance.



## Arden Hall

Arden Hall was built in 1845 by Benjamin Hargreaves the fourth son of Thomas Hargreaves (who lived at Oak Hill Mansion). The Hargreaves family became one of the wealthiest families in the area as the result of a successful textile business and owned the local Broad Oak print works, the largest mill in Accrington. Benjamin died in 1880 and the hall became the home of a number of notable residents until it was finally demolished in 1948-1949.



The gates to the hall still remain in position and now form a welcoming entrance to the area. The servant's quarters still survive as the Coach House which is now a private residence. The footprint of the hall is still visible and was subject to an archaeological dig in 2012.

Further information about the findings of the archaeological dig can be viewed by contacting the local Council on **01254 388111**.

## ☐ Plantation Mill

Half way up Plantation Road, at the top of the cobbled lane is the site of a fulling mill (water mill) and later calico (cotton) print works. Very little remains of the mill today although some stone walls, bricks, pipe work and metal work can be seen upon closer examination of the area. The original mill dates back to the late 18th century, during its time it was owned by the Hargreaves family and run by the Grimshaw family who built Owl Hall and Plantation House as their residences.



The mill was closed in 1934 and demolished in the 1940's.

Images held by Lancashire County Council and reproduced with their permission.



## **Recent Improvements**

Since 2008 Peel Park, the Coppice and Arden Hall have been the focus of major investments.

**Improvements include:**

- ❑ ***Improvements to all major paths making it easier for a greater number of people to access the summit***
- ❑ ***A new entrance feature to the main entrance at the top of Avenue Parade***
- ❑ ***A refurbished monument on the summit***
- ❑ ***An archaeological dig to record the ruins at Arden Hall***
- ❑ ***Information signage and seating***
- ❑ ***Habitat management including invasive weed control and woodland thinning***
- ❑ ***Collection of archaeological and wildlife information. The reports are available to view by contacting the local Council***



## Woodland thinning

Management to the woodland has included:

- ▣ *tree thinning*
- ▣ *converting coniferous and mixed plantations to semi-natural broadleaved woodland with the replanting of a mixture of native trees and shrubs*

An upland oak woodland habitat is encouraged through active management of the plantation, this is facilitated with the planting of predominantly Oak trees during any replanting.

## Getting Involved

The area is owned and managed by Hyndburn Borough Council. An active support group exists for the area 'Friends of Arden Hall and the Coppice'. They meet regularly to discuss the park and surrounding area, they have helped to advise on the recent improvements and continue to help the area develop through fund raising.

Anyone who is interested in the area is welcome to join the group.

The site is used by many different groups for many different purposes including horseriding, orienteering, fishing, conservation work and guided walks.

Frequently there is the opportunity to become involved in conservation work such as invasive weed control or tree planting.

To find out more or get involved contact **01254 356206**.

There are a number of allotment gardens on the site if you would like more information about current availability contact **01254 388111**.

