

The PROSPECTS Foundation | **Annual Report 2014/2015**



The PROSPECTS Foundation

FUNDING & SUPPORT

Our thanks go to the following partners who we have worked with over the past year and who have helped us achieve our aims:

Accrington and Rossendale College, Bootstrap Enterprises, Groundwork, Hyndburn Borough Council, Hyndburn Tree Wardens, Hyndburn & Ribble Valley CVS, Lancashire County Council, Lancashire Wildlife Trust and Red Rose Recovery.

Thanks also to all our funders without whom the work would not take place:



The PROSPECTS Foundation

CHAIRMAN'S INTRODUCTION

Three separate environmental issues have struck me recently. Together they illustrate the scale of current environmental problems.

I attended an event recently at which George Monbiot (environmental writer, journalist, speaker and campaigner) and Alan Watson-Featherstone (founder of Trees for Life) gave lectures on “re-wilding Britain” – the campaign to reintroduce native animal species *and their habitats* to parts of Britain’s landscape. This starts with red squirrels, Scottish wildcats, beavers and pine martins but leads to lynx and wolves and - who knows - bears. The striking message from these lectures was how unnatural our beloved landscape actually is and how much is missing from it. Our treeless uplands are the result of deforestation and intensive grazing and contain but a fraction of their true natural biodiversity – “green deserts”. Agricultural land is so intensively managed and polluted that large numbers of naturally occurring species are in decline. Virtually every hectare of Britain is more or less intensively managed - with devastating consequences for wildlife.

Secondly I have been following with some interest the campaign, also being spearheaded by George Monbiot, to “Keep it in the Ground”. This is the campaign to limit the rise in global mean atmospheric temperatures to no more than 2 degrees by not exploiting 80% of the Earth’s known fossil fuel reserves and to encourage financial institutions and other businesses to dis-invest from fossil fuel companies. This illustrates how much fossil fuel exploitation is endemic to our economy and financial system.

The PROSPECTS Foundation

Thirdly, I saw a film called “Cowspiracy” that lays bare the destructive results of the industrialised agricultural systems that support our conventional animal-based diets, through land use, forest clearance, energy consumption, pollution, waste and contributions to carbon emissions. The message here was that huge environmental gains could be made were it not for a conspiracy of silence and inaction among regulators, governments and – yes! – even environmental campaigning organisations.

I write this as the general election approaches. PROSPECTS is, of course, a-political. But as an individual if I want to cast a meaningful vote for action for the environment, because I think environmental issues are uppermost, I would be hard pressed. It’s just not there - or it is reduced to claiming credit for some local litter clean-up or dealing with dog mess!

These wide-scale issues are daunting, there’s no doubt. In terms of what can be achieved at the local level it can be overwhelming. However it has been a very good year for PROSPECTS – a year of consolidation, I would say, and expansion in the environmental awareness field. Our presence at the PROSPECTS Environment Centre (PEC), the awareness activities we have been running and the management of the Windfall Fund grants programme have produced more action than ever in wildlife conservation, community food growing, cycling and walking, energy conservation and renewables and social enterprise. PROSPECTS has engaged with growing numbers of people and groups from all of Hyndburn’s communities.

The PROSPECTS Foundation

The PROSPECTS Foundation is now over fifteen years old and has grown into a truly independent organisation, supporting a widespread community network. This it has done through the commitment and energy of project officers, managers and trustees, and all those volunteers out there. We will continue with our core purpose of creating as many opportunities as we can for people to get involved in the environment.

Phil Barwood

Chairman



The PROSPECTS Foundation

THE CHARITY

The PROSPECTS Foundation is an environmental charity, established by Hyndburn people in 1998, to help improve the quality of life for all Hyndburn communities and contribute local level solutions to wider environmental problems. We achieve this through a supported network of groups and by working in innovative ways with a diverse range of organisations and partners for environmental, social and economic benefits.

MISSION

To be the key movement in Hyndburn for environmental sustainability and to use our collective knowledge, skills, work and experience to secure this for current and future generations.

VALUES

- We value our environment, both local and global and respect its uniqueness and fragility
- We are committed to the principle of environmental sustainability
- We act as a catalyst for positive environmental change
- We believe in working collaboratively for our environment
- We believe that local people acting in their own right or collectively can reduce their carbon footprints by changing their behavior and practices

The PROSPECTS Foundation

- We are a people based organisation which is rooted in local communities
- We seek to work for the benefit of all communities both present and future
- We believe everyone has a positive contribution to make and we are committed to equality of opportunity for all
- We work ethically

SUSTAINABILITY THEMES

We focus on projects which meet our 6 Themes of Sustainability. These themes take account of both the local and global environment and contribute to the mitigation of climate change:

BIODIVERSITY – Protecting and enhancing local wildlife and plant life

ENERGY – Promoting energy conservation and the use of renewables

SUSTAINABLE TRANSPORT – Encouraging cycling, walking and the greater use of public transport

WASTE AND RECYCLING – Reducing, reusing and recycling waste

LOCAL FOOD – Increasing the production of local, organic, healthy food grown by and for the community

ENVIRONMENTAL AWARENESS – Raising awareness of environmental issues

The PROSPECTS Foundation

RECENT ACHIEVEMENTS

- The PROSPECTS Foundation has been in its new premises in the centre of Accrington for over two years and has welcomed more than 500 people through the door!
- The Activity Organiser has put together a varied and exciting programme of activities, films, workshops, courses and events over the last year and designed some fantastic window displays.
- The Windfall Fund has undergone a review of the first two years of operation. It has successfully funded 42 projects within all 6 PROSPECTS' themes and given out grants of £221,684 and we continue to work closely with EnergieKontor.
- The Cultivate programme is now funded by Lancashire County Council until the end of March 2016. It continues to provide training, access and activities to encourage people across Hyndburn to grow food with the aim of promoting better health, a more active lifestyle and social interaction.
- We have secured some additional funding from Lancashire County Council to run a five month pilot Food Poverty project linking food growing with people experiencing food poverty. The initial idea is to target groups that work with people experiencing food poverty such as food banks, social housing, family centres and lunch clubs and support and encourage them to 'grow their own'.
- The Nature Conservation project has successfully set up a new Green Team of volunteers which carries out environmental projects across the whole Borough.

The PROSPECTS Foundation

- The Social Enterprise Development Initiative has continued to support existing enterprises including Hyndburn Used Furniture Store, the One Planet shop and Woody (Hyndburn) CIC.
- We continue to work closely with the PROSPECTS Panels. The groups continue to identify and develop new community projects whilst maintaining existing ones.
- We have run a series of Common Purpose events to re-focus the direction of the organisation and to ensure our strategic aims and objectives are up to date.
- We are privileged to have the pleasure of working with a substantial number of dedicated volunteers on all our projects and we are extremely grateful for all their hard work. The TOTAL value of volunteer time = £81,038, this includes PROSPECTS Panels, PROSPECTS Management Committee and associated sub-groups, volunteers on projects and in the PROSPECTS Environment Centre and attendees at activities/training.



Nature Conservation



Nature Conservation

PROGRESS

The Nature Conservation in Hyndburn Project is a year-long Windfall funded project which is building on the work of the Access to Nature project by continuing the Monday Conservation Group, establishing an Environmental Task Force (known as the Green Team) to work throughout Hyndburn and running a mini walks festival during the summer. The Monday Group and the Green Team have worked on a variety of projects throughout Hyndburn including hedgelaying at Harwood Bar, tree planting at Peel Park, fencing and installing a gate at Bowley Scout camp, fencing at St Mary's Primary School in Clayton and rebuilding a stone wall on the Coppice.

In addition the project also worked with the Prince's Trust carrying out a week-long activity with Growing Wild, groups from Accrington and Rossendale College and the PROSPECTS' Panels.

During the project:

- there were 75 practical work days
- 16 different sites were worked on
- a total of 134 volunteers carried out 374 volunteer days of work, valued at £15,596
- the walks festival consisted of 11 organised walks and was attended by 72 people

Cultivate



Cultivate

PROGRESS

The Cultivate project has worked with a wide and varied range of community groups over the last year including the Stroke Association, Accrington Women's Centre, One Planet Planters, Inward House, Hyndburn Homes, Red Rose Recovery and Inspire and has established a number of new food growing areas around Hyndburn. Feedback from group members indicates that the sessions are valued and teach people new skills and increases their fruit and vegetable consumption as well as providing an important social function which many participants look forward to. During 2014/2015:

- 116 separate activities have taken place and 337 new people have learned food growing skills
- 437 pupils have taken part in sessions at a number of different schools
- There have been 861 attendances at regular sessions of which 322 people were completely new to the project
- The value of volunteer time on Cultivate projects is at least £16,305

"Mary", an elderly vulnerable lady, has been regularly taking part in a monthly garden club for 3 years after attending a container growing course run by Cultivate. She says that not only has she more confidence to grow her own veg at home but also thoroughly enjoys working at the garden, socialising with the other ladies in the group and has learnt so much. "All of it was fantastic, I have enjoyed every minute. Life Changing!" Mary now takes responsibility for regular watering of the garden outside of the monthly get together and actively attends other social events as a result of the volunteering.



Environmental Awareness



Environmental Awareness

PROGRESS

The Activity Organiser has had a very busy year promoting PROSPECTS and organising events. 370 people came into PROSPECTS Environment Centre (PEC) to enquire about activities and issues and 88 of these asked about volunteering opportunities. The 'What's On' contact list and Facebook page have both been developed and the website has been updated. As part of the project the ground floor of PEC has been equipped as a training room and meeting space. PEC is now a place where people can learn together, share the tools and resources they need to work on projects of their own choosing at their own pace and in a safe, friendly and inclusive environment. We now have regular (fortnightly) MIAMI (Make It And Mend It) and Men's Sheds workshops, run by volunteers, which are places for skill sharing and informal learning, of individual pursuits and community projects, of purpose, achievement and social interaction.

The Environmental Awareness programme is funded by the Windfall Fund, Awards for All and East Lancashire Clinical Commissioning Group (CCG) with different activities being carried out under each Fund.

During the period covered by Awards For All funding we:

- engaged with 180 different people
- had 375 places filled on 61 workshops, training sessions, film shows, talks and other events

Environmental Awareness

Through the Green Living programme funded through the CCG:

- 65 people attended one or more of the 33 Green Living activities and the total attendance meant that 237 places were filled
- More than 15 people qualified for an AQA Achievement Award and others are still completing their hours and evidence through MIAMI and Men's Sheds.

The types of courses/events that have been held include traditional crafts – beeswax candles, bath bombs, salts and soaps, First Aid, natural cleaning, willow weaving, natural healing using herbs for health and nutrition, film shows, map reading and GPS, chainsaw use, bird box building, bookshare café, tool maintenance, Risk Assessment training and a bat talk.

We also hosted 2 student placements from St Christopher's High School who brought an added dimension to the team.

Regular volunteers, who have helped out with event preparation, staffing the PEC, cleaning, information collation etc. have put in 356 hours of their own time which is valued at £4,877.

We have a new nature walks and photography group starting in April 2015 which will be run by volunteers supported by staff members and a new cycling project in partnership with CTC the national cycling charity starting in May 2015.



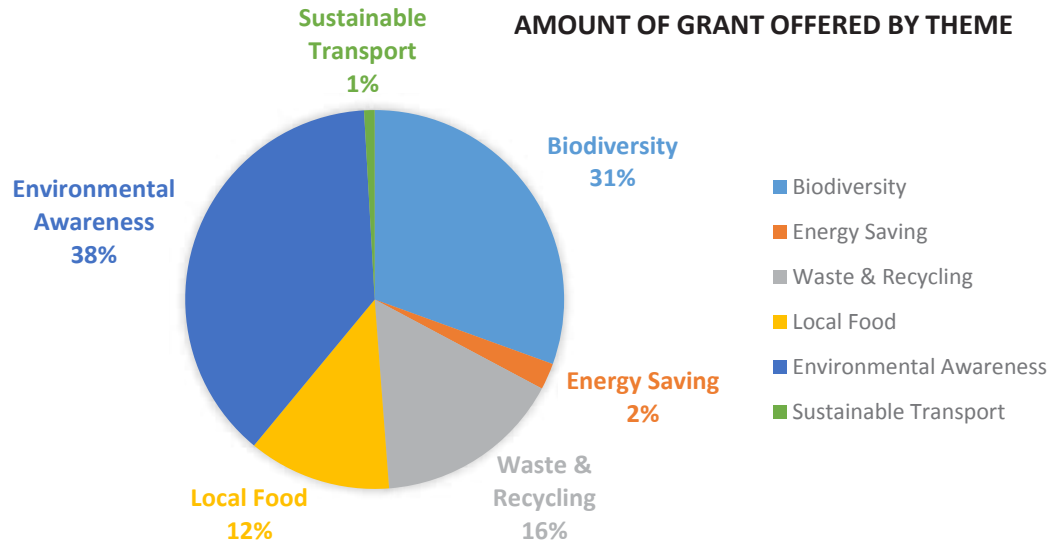
The Windfall Fund



The Windfall Fund

PROGRESS

Since the Windfall Fund was launched in April 2013, 42 projects have been funded totaling £221,684. Projects have been funded under each of PROSPECTS' 6 Themes of Environmental Sustainability.

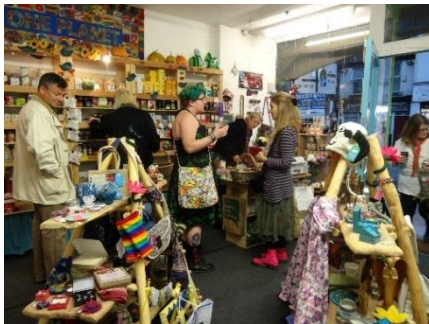


The Windfall Fund

KEY FACTS

- A review of the Windfall Fund was undertaken in 2014 to look at progress, achievements and options for the future. Results from a Survey Monkey questionnaire indicated that 95% of applicants were very satisfied/satisfied with how long it took between applying for and receiving the grant and 90% respondents said they received the right amount of help and advice during the application process.
- A competition to design a logo for the Fund is being carried out by the Hyndburn Schools Eco-Cluster project
- We have started taking school groups to visit the wind farm and so far 4 visits have been made.
- A Mini Projects budget was set up during the year to complement the existing scheme and groups can now apply, using a very simple form, for project costs up to £250.
- The total amount of match funding brought in over the first two years of the scheme by applicants to complement their Windfall grant was approximately £233,000 which more than doubles the value of the Fund.
- PROSPECTS staff have worked with 23 of the 42 projects funded helping with the delivery and activities associated with the projects.
- In the future the Fund may be targeted to promote under represented themes, communities, partners or geographical areas, depending on PROSPECTS' priorities at the time to make the best use of the resources and to deliver positive outcomes in terms of environmental sustainability.

Social Enterprise Development



Social Enterprise Development

PROGRESS

- PROSPECTS, through the Charity Manager post, has continued to provide support for three social enterprises during the past year. The enterprises are One Planet (Accrington) Limited, Woody (Hyndburn) CIC and Hyndburn Used Furniture Store.
- One Planet is a co-operative retail shop based at 54 Abbey Street in Accrington and focuses on selling local, ethical, Fairtrade and organic products. The shop opened in October 2010 and now has 122 members. During the year the co-op secured funding to run an outreach project called 'Branching Out' with funding from the Windfall Fund and Awards for All. Branching Out focused on supporting people with low confidence and offered training and mentoring so that they could learn business skills.
- Following on from the Branching Out programme the co-op is now looking to start a new outreach programme working with all the schools in Hyndburn. The aim of the Schools Liaison programme is to run workshops with schoolchildren of all ages highlighting the importance of thinking about what we buy and how we can all do it more ethically and with the environment in mind.
- Woody is Hyndburn's woodland management social enterprise and was set up as a Community Interest Company in March 2012. Run entirely by volunteers Woody was busy this year on two major schemes, the Coppice in Accrington and Wilson's Playing Fields in Clayton-le-Moors. The work on the Coppice involved tree thinning, tree planting, making and installing benches, path edging, waymarkers and bird boxes. The work at

Social Enterprise Development

Clayton involved regenerating a large hazel coppice by cutting all the stems to ground level. Going forward, the intention is to harvest the hazel coppice stools to create woodland products.

- As well as the woodland management work that Woody secures the volunteers are keen to help create a market for locally made wood products and also to provide training for volunteers. Woody has purchased a portable sawmill and uses it to make timber products. There's nothing better than using wood felled on a site through woodland management to manufacture, for example, a bench that we then install on the same site.
- Hyndburn Used Furniture Store (HUFS) is a furniture re-use charity based in the Springhill ward of Accrington. Set up in 2004, HUFS currently provides a bulky waste service for both Hyndburn and Rossendale Borough Councils as well as being the delivery partner for Lancashire County Council's Care and Urgent Needs Support Scheme in the two districts. HUFS also collects unwanted furniture and white goods and sells to people in need in Hyndburn at a low cost.
- During the year HUFS has also set up a new cardboard shredding project with funding from the Windfall Fund. Waste cardboard is collected from local small businesses and is shredded to make fibre bedding for horses as well as packaging.
- As always, all three enterprises are heavily reliant on volunteer support. The total volunteer contribution across all three enterprises, including volunteer cover at One Planet, volunteering on woodland management tasks and attending board meetings amounts to £21,698 for the year.



PROSPECTS Panels

PANEL NEWS

This is a round-up of what has been going on with the PROSPECTS Panels across the Borough.

BAXENDEN COMMUNITY FORUM has had a busy year. It has carried out a number of activities including a litter pick and balsam bashing along Woodnook Vale, painted the fence around the community garden, planted poppies under the Accrington PALS' mosaics and carried out maintenance of the Rose Garden in Haworth Park. The main project of the year was Hollins Woodland Way for which the Forum, with the help of Lancashire Wildlife Trust, secured grants from Biffa Awards and the Windfall Fund to surface the footpaths through Hollins Wood which had become inaccessible for most of the winter months.



PROSPECTS Panels

GREAT HARWOOD PROSPECTS PANEL concentrated on the themes of Biodiversity and Sustainable Transport over the last year. The Panel worked with the PROSPECTS Green Team to complete the hedgerow laying at Harwood Bar Wood and bulb planting was carried out at a number of locations in Great Harwood including Goldacre Lane, Blackburn Old Road and Dean Lane. A number of seasonal, circular walks were organised in partnership with Hyndburn Ramblers and Great Harwood Camera Club including a walking bus to Foxhill Bank Nature Reserve which featured a tour of the reserve with the reserve manager from the Lancashire Wildlife Trust. Cycle maintenance classes, a Dr Bike session and led cycle rides for adults were also arranged by the Panel along with a seven mile family cycle ride – ‘Tour of Hyndburn Greenway’ to coincide with the Tour de France.



PROSPECTS Panels

HUNCOAT COMMUNITY FORUM has supported and actively taken part in a huge tree planting project in Spouthouse Woodlands in partnership with Hyndburn Borough Council. Over 6,000 trees were planted and hedgerows restored or replaced to bring an otherwise muddy field back to life as an amenity for both the local community and wildlife. The Forum has also continued to work on the award winning 'Hands on Huncoat Railway Station', Huncoat in Bloom and The Peace Garden. The Forum has been a consultative body regarding a replacement children's play park, speeding and parking control measures and on improved access to the War Memorial. The main goal for the forthcoming year is to expand the membership and encourage other residents to get involved in community projects by volunteering their time, ideas and enthusiasm.



PROSPECTS Panels

RISHTON PROSPECTS PANEL started the year with a 'dawn chorus' walk in Cut Wood Park and identified over 30 species heralding in the spring. The willow arbour and tunnel in Cut Wood Park needed some professional help to repair damage and to advise on the annual trimming and inter weaving of the new growth. The Panel has also, once again, kept the planters and raised beds at the railway station and around the village filled with bedding plants and has kept the canal side shrubbery and rose beds looking tidy around High Street bridge. The Panel received assistance from the Green Team to strim and rake the wild flower banking at Norden bridge and also to help with a pilot project to prepare new ground and sow wild flower seeds on the grass banking at the station. The Panel, thanks to a generous benefactor, refurbished and painted the stone railway station name sign. Six raised beds for food growing are now well established at the station and thanks to the Cultivate programme materials for two more beds have been set aside. A major task for the future will be clearing more of the available ground for the extra beds.



PROSPECTS Panels

PROSPECTS staff have also worked closely with the Panels over the course of the year. Cultivate and the Nature Conservation project along with the Monday Volunteer Group and the Green Team have worked on the following projects:

BAXENDEN COMMUNITY FORUM: coppicing work at Hollins Wood; footpath clearing on the Jubilee Walk route

CHURCH PROSPECTS PANEL: chicken wiring of decking, shrub pruning and litter picking at Donkey Back Picnic Site

GREAT HARWOOD PROSPECTS PANEL: bench installation and hedge laying at Harwood Bar; bulb planting on grass verges across Great Harwood

HUNCOAT COMMUNITY FORUM: various activities at Spouthouse Wood including hedge planting, fence and stile removal, meadow cutting and Beech thinning

RISHTON PROSPECTS PANEL: strimming at Norden Bridge; weeding, strimming and wildflower meadow creation at Rishton station; mulching, bark spreading and fruit/vegetable planting in the raised beds at Rishton station

VOLUNTEER CONTRIBUTION: in total, the Prospects Panels' volunteers have clocked up £13,984 of volunteer time (based on average hourly rate of £13.90/hr). This amounts to just over 1,000 volunteer hours during the 12 months April 2014 to March 2015

Charity Management

CHARITY DEVELOPMENT

Through projects such as Cultivate, Nature Conservation and Environmental Awareness there has been engagement with a significant number of disadvantaged local people. Our work has given our beneficiaries new skills, knowledge, social activities, better physical and mental health and the chance to take part in something meaningful and improve their quality of life. The projects have also greatly contributed to our aims and six themes of sustainability.

During the year the trustees have discussed the 'Common Purpose' of the charity. These are some of the main points of discussion under each theme:

BIODIVERSITY: we are keen to support the Council's aim to designate Woodnook Vale and Peel Park/The Coppice as official Local Nature Reserves. To this end we are seeking funding to develop greater volunteer involvement and a sense of community ownership and a responsibility for the management of these two major sites of ecological importance in the Borough.

ENERGY: we have carried out very few projects in this thematic area of work but we are keen to pursue the idea of helping to make community buildings more energy efficient in Hyndburn. Furthermore, the idea of creating a community-owned wind turbine in Hyndburn is one we still want to pursue.

Charity Management

SUSTAINABLE TRANSPORT: activities up until recently have mainly involved 'Boots & Bikes' (Great Harwood PROSPECTS Panel) plus improvements to the canal towpath, footpaths and Access to Nature walks. We are keen to develop more opportunities for getting people involved with cycling and walking and in summer 2015 our Activities Organiser is coordinating a range of walks around the nature areas in Hyndburn and cycling activities for a range of levels and interests.

WASTE AND RECYCLING: our recent activity in this area has mainly been to support the long-term sustainability of Hyndburn Used Furniture Store as well as recycling activities through the Environmental Awareness project based at PEC. The issue of too much waste going to landfill continues to be a major problem for Lancashire and the UK so we still need to think seriously about how our organisation can help develop solutions to this problem.

LOCAL FOOD: food poverty is a big issue at the moment and we are keen to develop some project work in this area. We have secured £5,000 to look at introducing the growing of fresh produce in collaboration with Food Banks. This will take place from April to September 2015. There is still a desire to improve site facilities at **Tinker Brook** such as the pre-fab building and even the potential to expand activities to the other side of the brook with a connecting footbridge. Bootstrap continue to use the site for horticultural therapy activities for people with additional needs and disadvantaged people.

Charity Management

ENVIRONMENTAL AWARENESS: the main vehicle for this theme has been the Environmental Awareness project driven by our Activity Organiser. Future activities need to build on this excellent work but at the same time fit with the charity's priorities. One of these priorities is to support the designation of Local Nature Reserves in Woodnook Vale and Peel Park/The Coppice.

Based on these discussions the Charity Managers will continue to support the development of the charity through planning future direction, key objectives and activities. As with most charities, however, we continually need to seek funding for our project work, development work and core activities.

The Charity Managers also ensure the efficient running of the organisation, the supervision of staff, updating of policies and procedures and liaison with Trustees.



The PROSPECTS Foundation

GROUPS WE HAVE WORKED WITH

Aawaz
Accrington Academy
Accrington Blind Society
Accrington and Rossendale College
Accrington Women's Centre
Acorn Steiner Initiative
Adelaide House/The Bridge
All Saints Primary School
Altham Primary School
Baxenden Community Forum
Belthorn Academy
Belthorn Village Committee
Broadfield Specialist School
Carers Link
Church PROSPECTS Panel

Church & Oswaldtwistle Cricket Club
Churchfield House Ltd
Clayton with Altham PROSPECTS Panel
Clean & Green Recovery
Community Restart
Community Solutions North West
Copperhouse Children's Centre
East Lancashire Bat Group
Ernest Street Baptist Chapel
Fairfield Children's Centre
Formation Pathways
Friends of Huncoat School
Friends of Jackhouse Nature Reserve
Friends of St Christopher's
Friends of St Paul's

The PROSPECTS Foundation

Great Harwood Allotments Society
Great Harwood Children's Centre
Great Harwood PROSPECTS Panel
Green Team
Growing Wild
Harrington Street Community Garden
Hippings Methodist School
Hollins Technology College
Huncoat Community Forum
Huncoat Primary School
Hyndburn Homes
Hyndburn Homewise Society
Hyndburn Used Furniture Store
Hyndburn Vol & Community Resource Centre
Incredible Edibles Accrington

Inward House
Inspire
Lancashire Wildlife Trust
Maundy Relief
Meadowway Allotment
Milnshaw Residents Association
Monday Conservation Volunteer Group
Mount Carmel High School
Mount Pleasant Primary School
Network Rail
Newground C.I.C.
Norden High School
One Planet (Accrington) Ltd
One Planet Planters
1st Oswaldtwistle Scout Group

The PROSPECTS Foundation

Our Lady & St Hubert's Primary School
Peel Park Primary School
Pendle View
Piggy Park
Portland Street Community Centre
Prince's Trust
Rishton Methodist School
Rishton PROSPECTS Panel
Rough Lee Care Home
Sandy Lane Gardening Group
St Anne's & St Joseph's Friends United
St Anne's & St Joseph's Primary School
St Charles Primary School
St Christopher's High School
St Mary's Primary School, Clayton-le-Moors

St Mary's Primary School, Oswaldtwistle
St Mary Magdalen's Primary School
St Paul's Barnfield Scout Group
Springhill Primary School
Stroke Association
Sure Start Hyndburn
The Art Garden
The Base
The Duckling Club
Woodnook Residents Community Association
Woody (Hyndburn) C.I.C.
Young Carers

The PROSPECTS Foundation

CHARITY INFORMATION

The PROSPECTS Foundation is a registered charity and a company limited by guarantee.

REGISTERED CHARITY NUMBER: 1076541

REGISTERED COMPANY NUMBER: 03686719

BANKERS: Triodos Bank, Deanery Road, Bristol, BS1 5AS

SOLICITORS: Forbes Solicitors, Rutherford House, 4 Wellington Street, Blackburn, BB1 8DD

AUDITORS: KM Accountants, 4-6 Grimshaw Street, Burnley, Lancashire

INVESTMENT ADVISORS: Wrigleys Solicitors, 19 Cookridge Street, Leeds, LS29 3AG

REGISTERED OFFICE: 54 Broadway, Accrington, Lancashire, BB5 1EW

TELEPHONE: 01254 230348

EMAIL: info@prospectsfoundation.org.uk

WEBSITE: www.prospectsfoundation.org.uk

The PROSPECTS Foundation

TRUSTEES:

Phil Vincent-Barwood (Chairperson)

Paul Gott (Vice-Chair) (Huncoat Community Forum)

Nicholas Cort (Treasurer)

William Matthews (Baxenden Community Forum)

Stephen Hemingway (Individual Member)

Paul Worswick (Clayton-le-Moors with Altham PROSPECTS Panel)

Colin Cooper (Rishton PROSPECTS Panel)

Catherine Holmes (Church PROSPECTS Panel)

Margaret Worden (Individual Member)

Neil Mooney (Individual Member)

Councillor Harry Grayson (Hyndburn Borough Council)

County Councillor Miles Parkinson (Lancashire County Council)

OFFICERS:

Charity Managers: Mike Stapleford/Ian Plested

Nature Conservation Officer: Roger Plum

Community Food Growing Officers – Cultivate: Julie Livesey/Ian Hodgson

Activity Organiser: Barbara Sharples

Windfall Fund Co-ordinator: Alison Silver



The PROSPECTS Foundation | **Annual Report 2014/2015**

